

JPOS User Manual

V2.0.0

1. Installation

1.1. Install Java

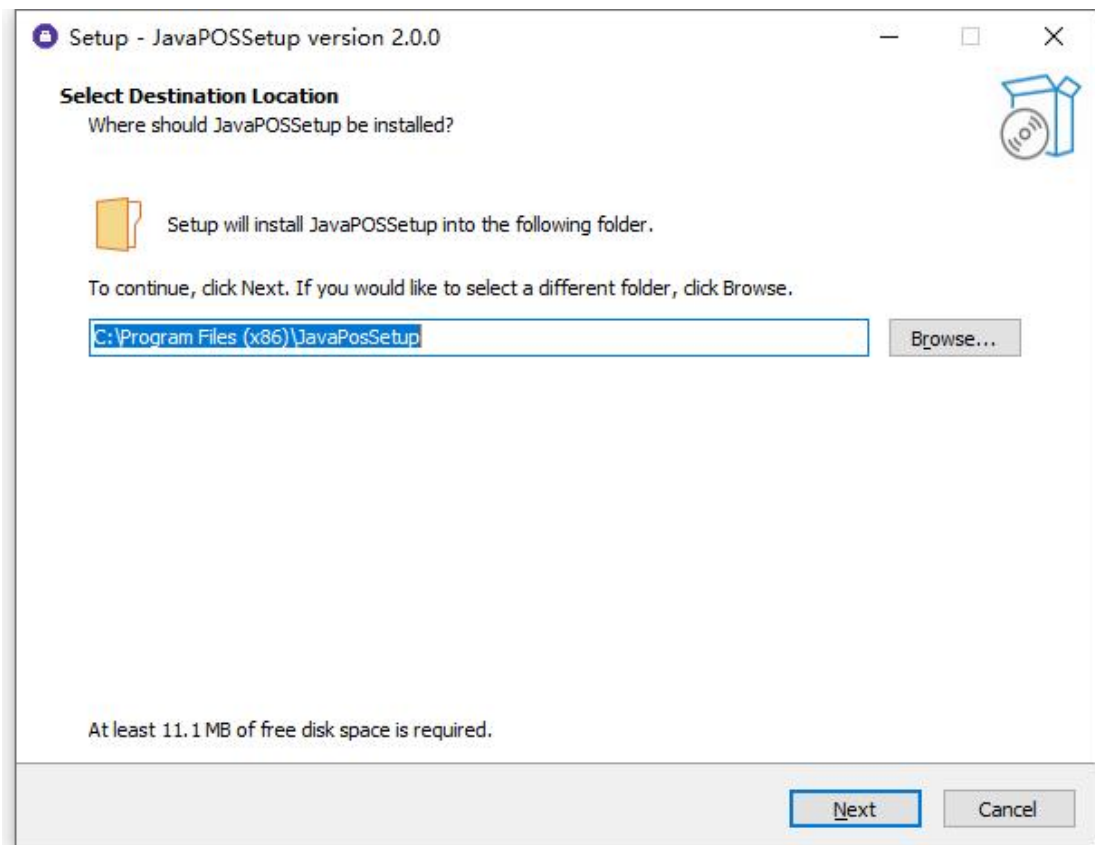
Java 1.8 or higher must be installed on the system before running the installation program.

Users: Install the Java Runtime Environment(JRE).

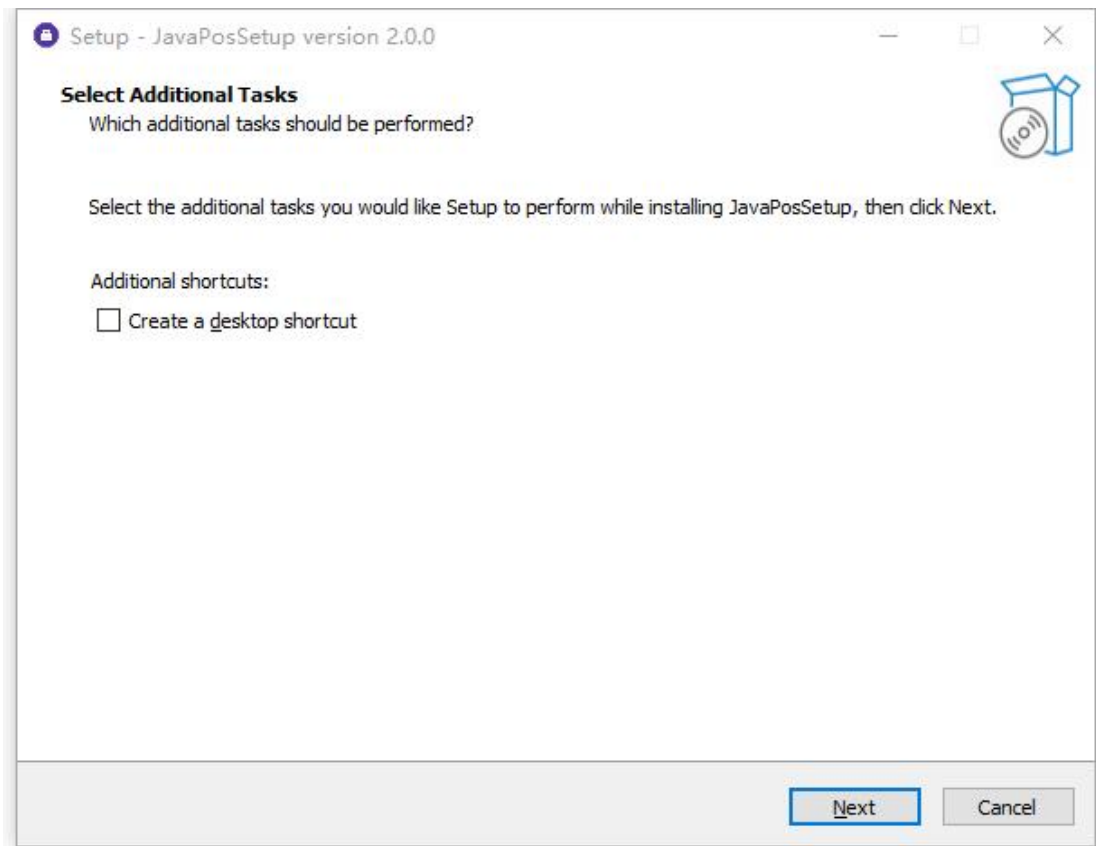
Developers : Install the Java Development Environment(JDK).

1.2. Install JavaPOS

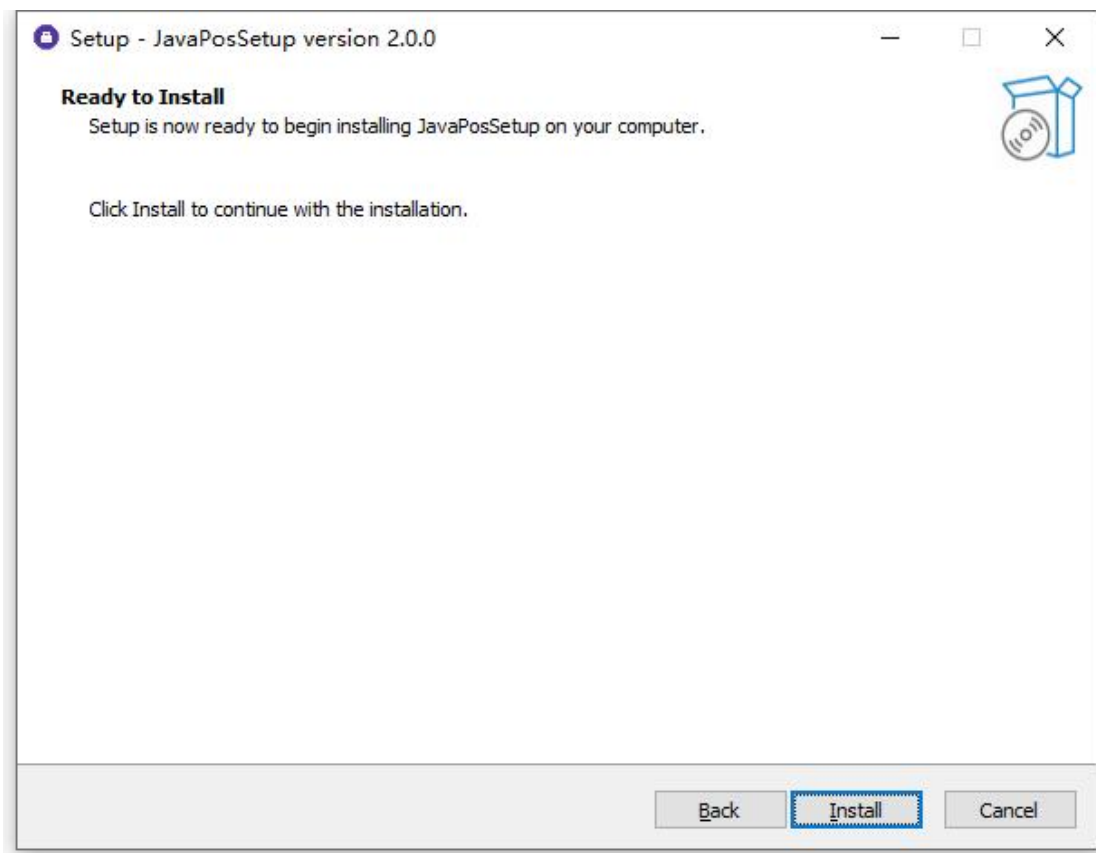
Execute JavaPosSetup.exe.



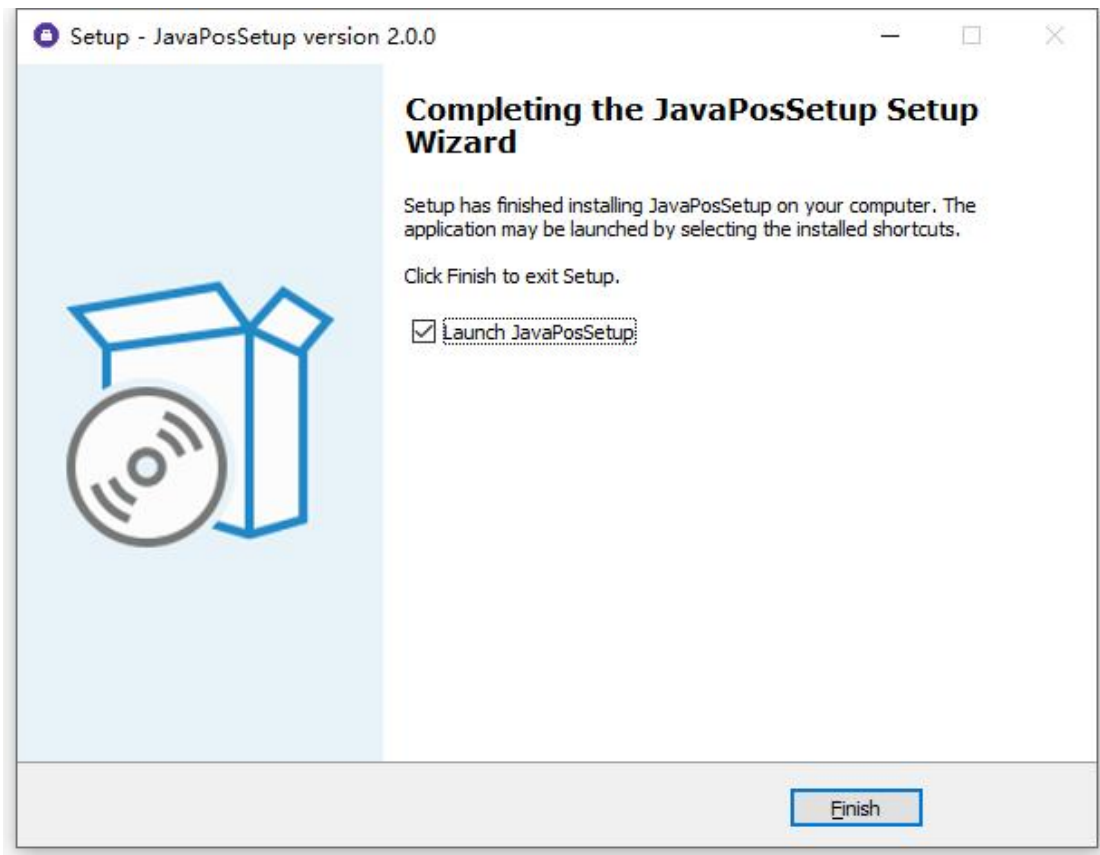
Choose installation path



Choose whether to create a desktop shortcut

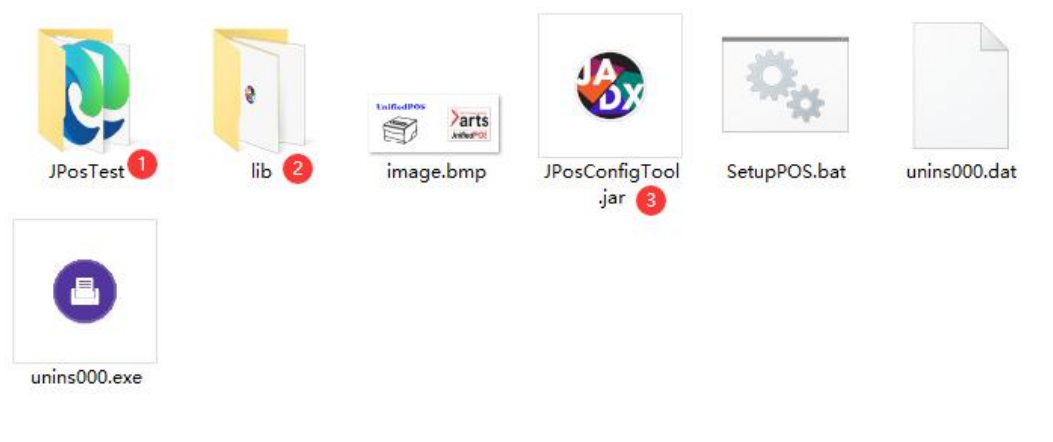


Start installation



installation is complete

2. Introduction to installation files

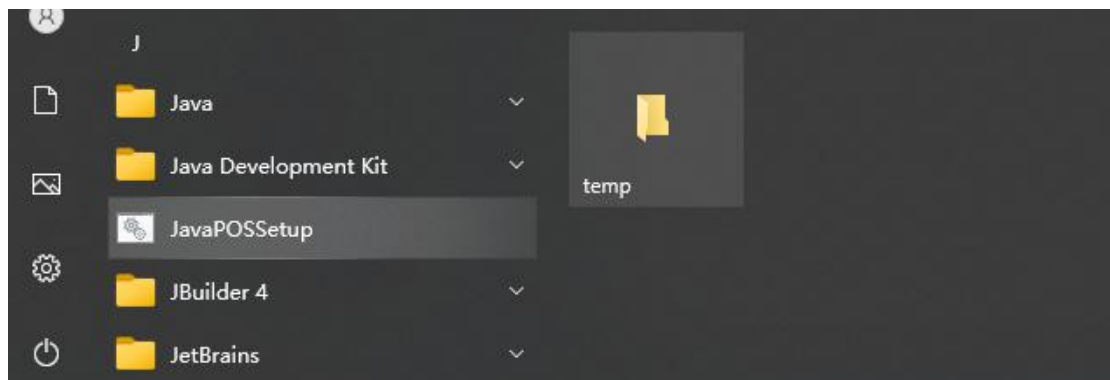


- ① JPOS Sample.Sample demonstrated how to call printers and cash boxes.
- ② Lib: All JavaPOS libraries
- ③ JPosConfigTool: JavaPOS XML Settings Tool

3. JPOS Config Tool

3.1 Starting JavaPOSSetup

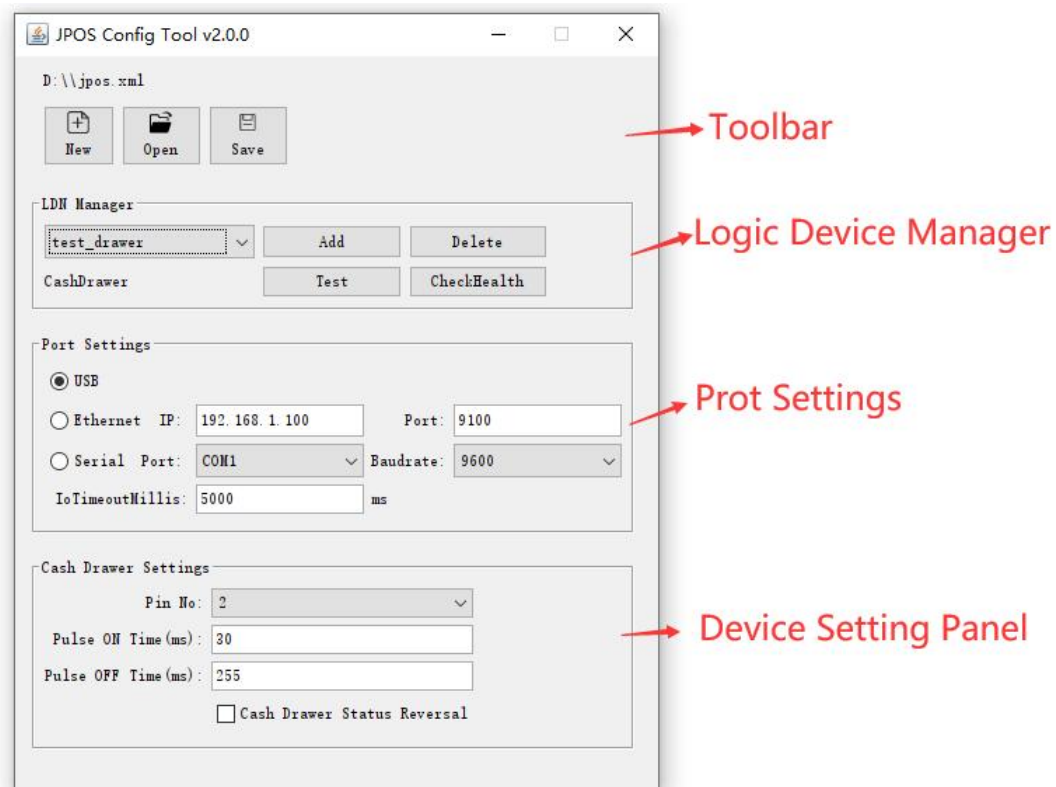
Run JavaPOSSetup from the following program group.



Notes:

The SetupPOS should be run with Administrator (Windows) or root (Linux) privileges. Failure to do so may result in unexpected behavior and the open/save may not be successful.

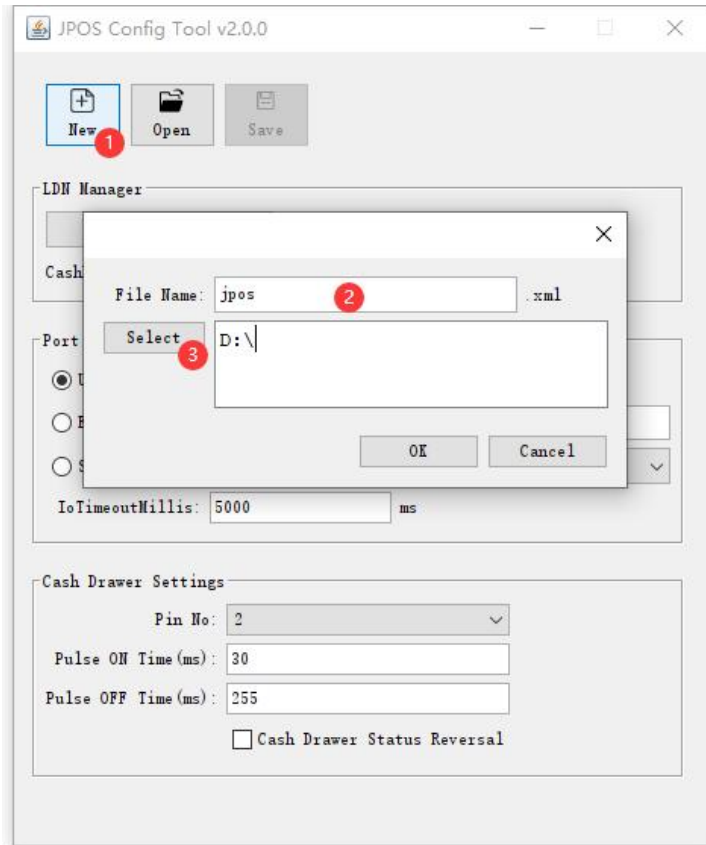
3.2 Main Window



- Toolbar is used to manipulate JPOS configuration files
- LDN Manager for local device operations
- Port Setting is used for setting local device interfaces
- Device Setting Panel is used for specific device parameter settings

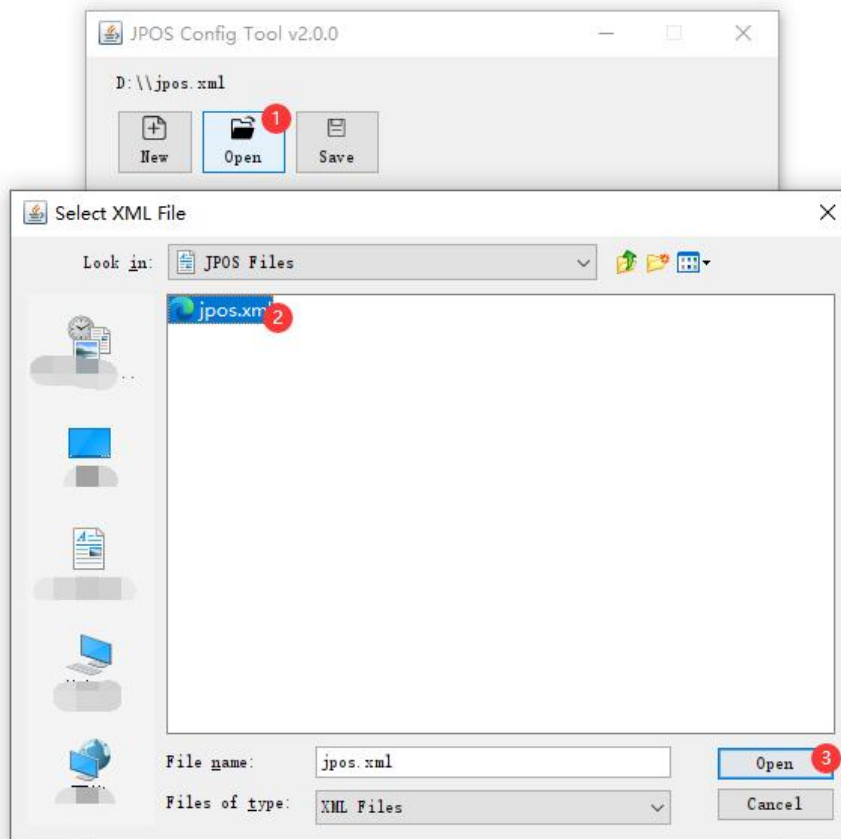
3.3. Toolbar

3.3.1. New



- ① Click the New button to create a new configuration file.
- ② Please enter the configuration file name here.
- ③ Please select the path where the configuration file is stored.

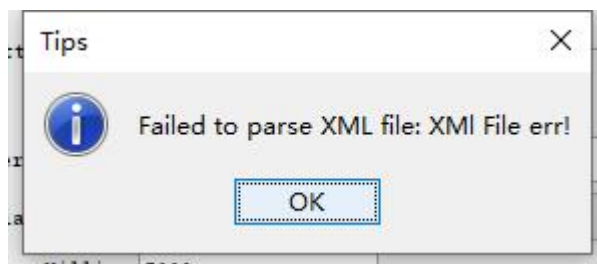
3.3.2. Open



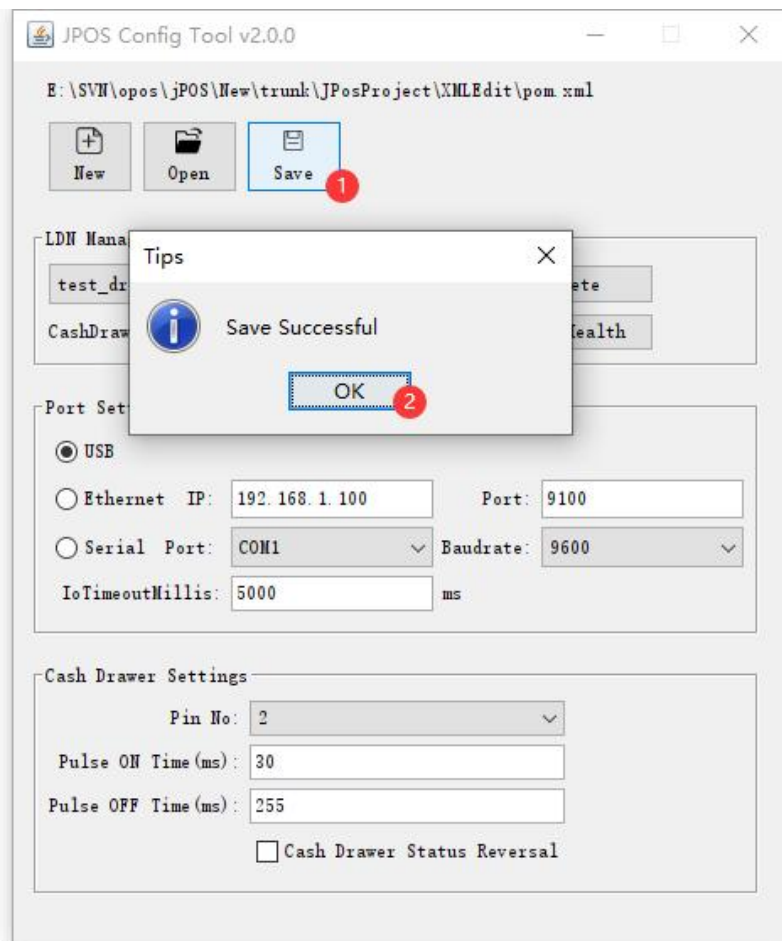
- ① Click the Open button to open the file selection dialog box.
- ② Select the saved standard jpos.xml file.
- ③ Click the Open button in the Select XML File to complete the file opening.

Note:

If you choose a non-standard jpos configuration file, the following error message will appear:



3.3.3. Save



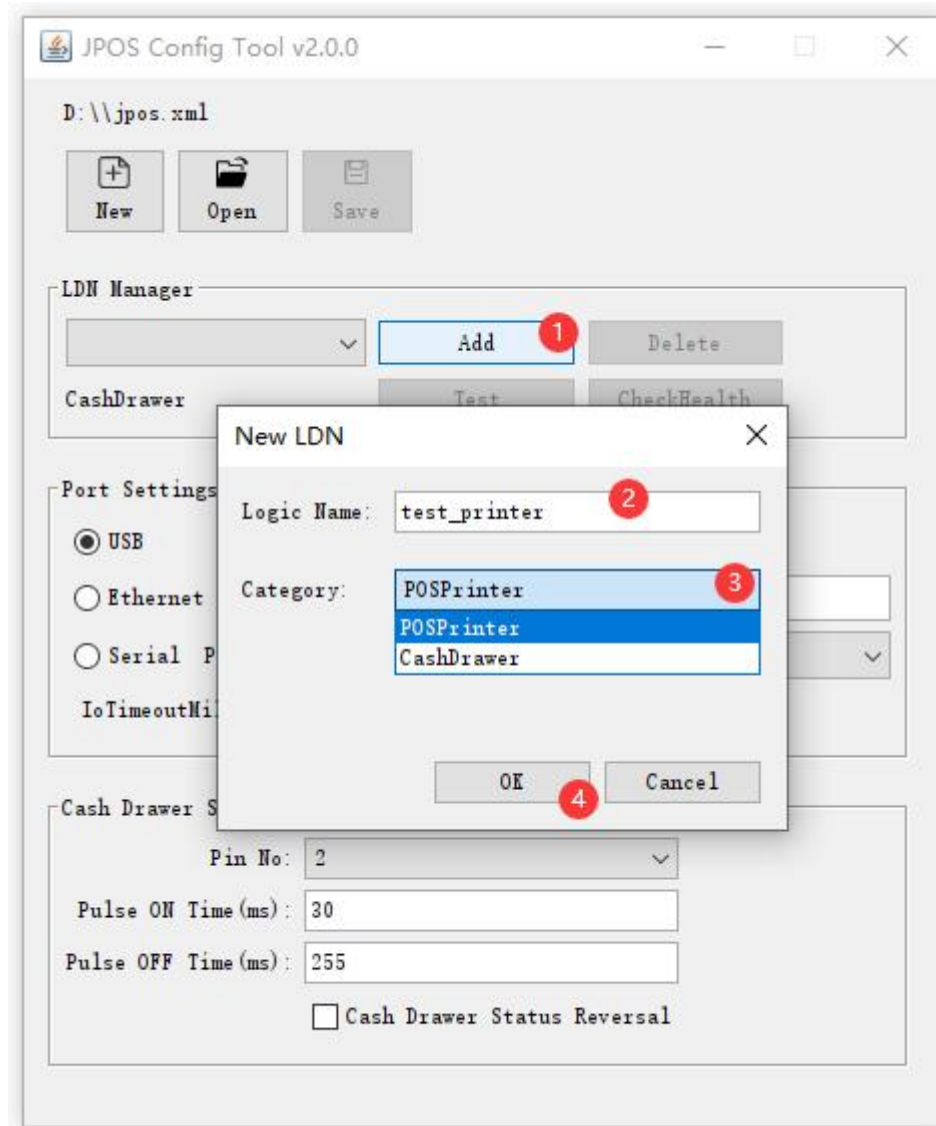
- ① Click the Save button to save the current modifications.
- ② Modification completed, click the OK button to close the completion prompt.

Notes:

A local device must be added, otherwise the Save button will be disabled.

3.4. LDN Manager

3.4.1. Add

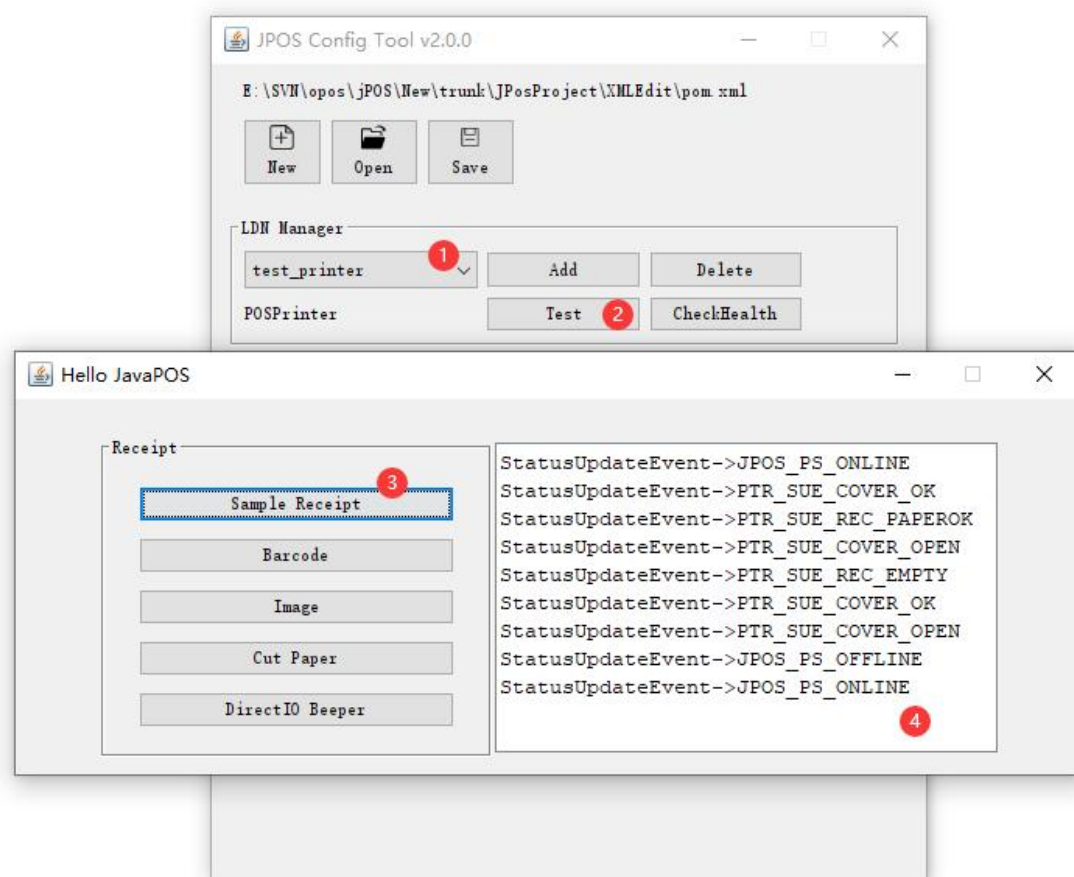


- ① Click the Add button to add a new jpos device
- ② Please enter Logic Name of the jpos device
- ③ You can select the device category, currently printers and cash drawers are supported.
- ④ Click the OK button to complete the addition

3.4.2. Delete

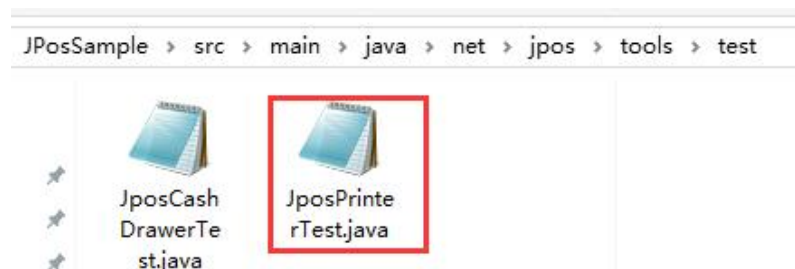
Select the corresponding device and click the Delete button to delete it. If there is no selected device, the Delete button is disabled

3.4.3. Test Printer

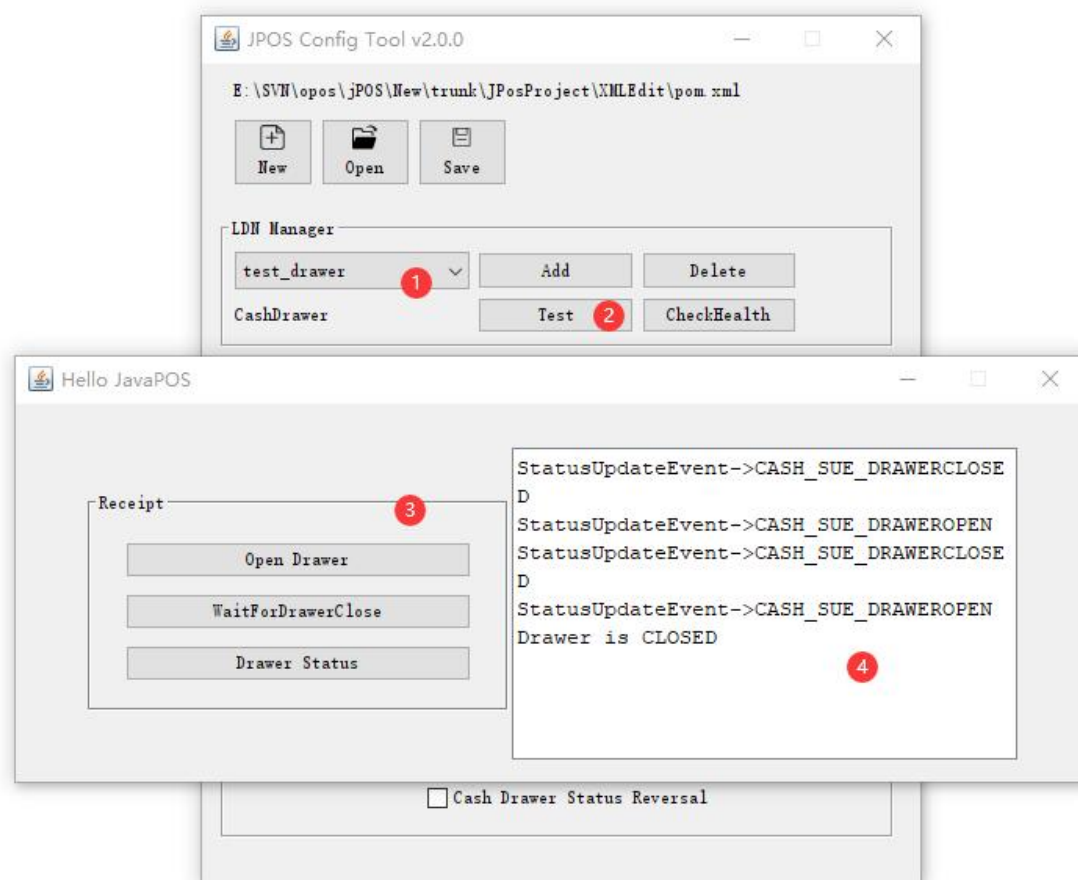


- ① Select the Logic Device Name of the type of printer device.
- ② Click the Test button to open the Printer test dialog box.
- ③ Click the button in the Receipt option to test the printer's related functions.
- ④ The prompt box will display events of changes in the status of the printer.

Note: You can find the source code of this dialog box in JPosSample



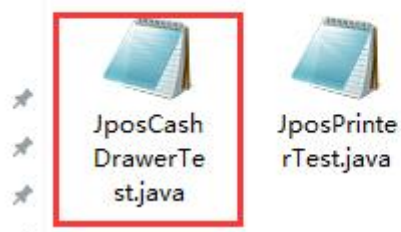
3.4.4. Test Cash Drawer



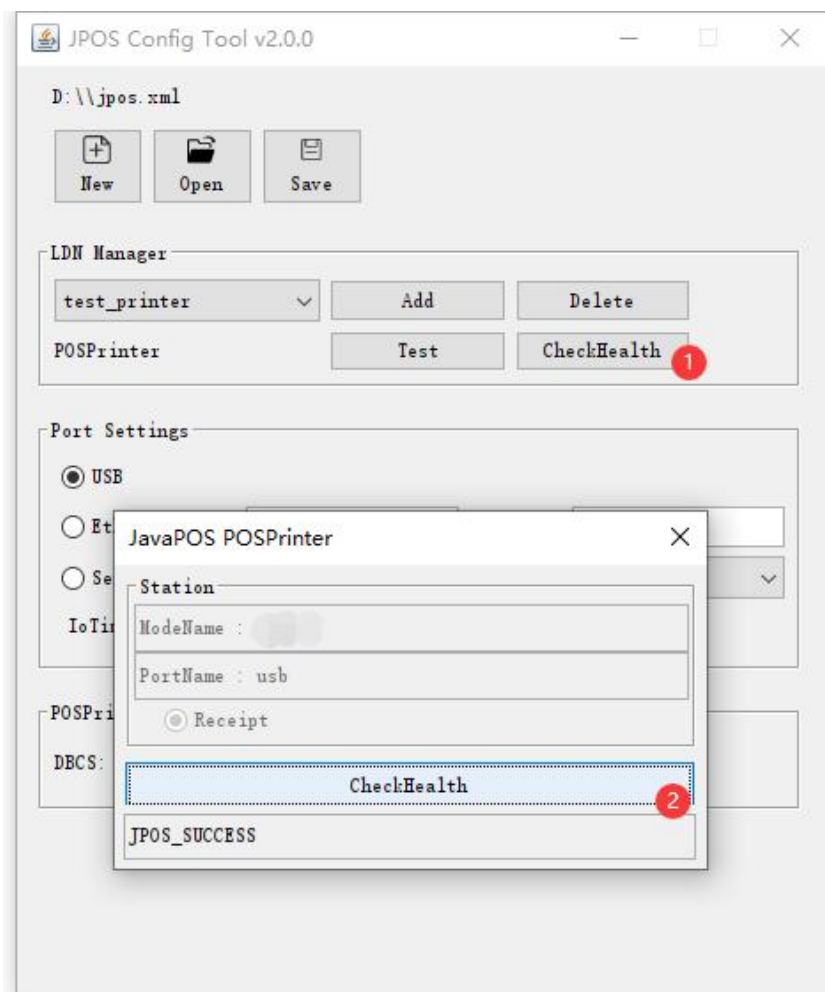
- ⑤ Select the Logic Device Name of the type of cash drawer device.
- ⑥ Click the Test button to open the Cash Drawer test dialog box.
- ⑦ Click the button in the Receipt option to test the cash drawer's related functions.
- ⑧ The prompt box will display events of changes in the status of the cash drawer.

Note: You can find the source code of this dialog box in JPosSample

> JPosSample > src > main > java > net > jpos > tools > test

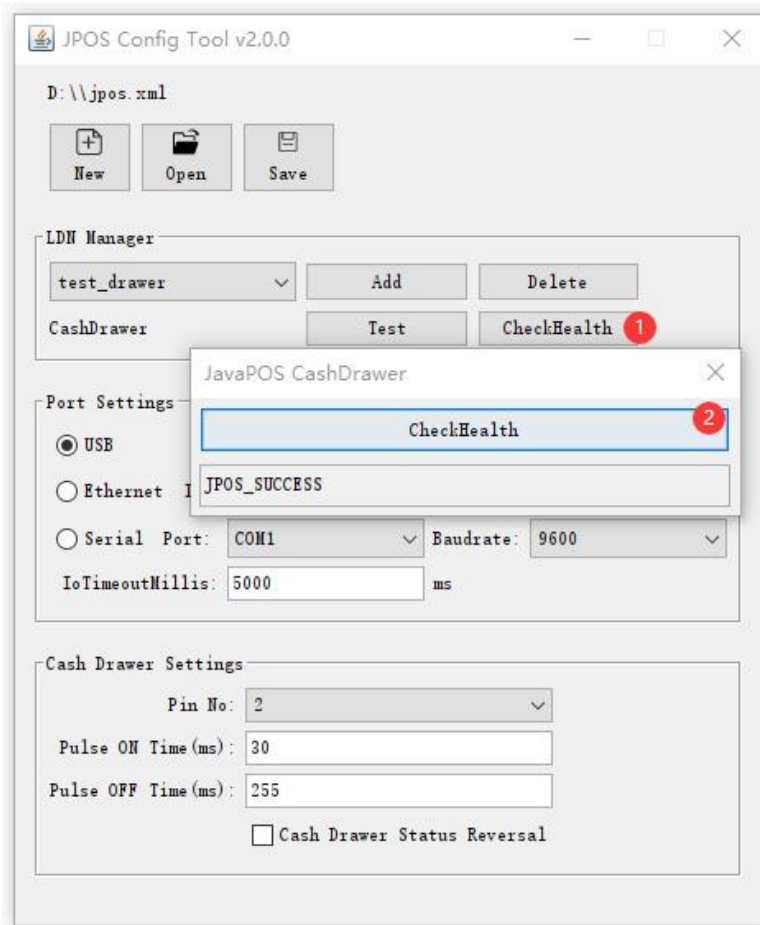


3.4.4. CheckHealth Printer



- ① Open the checkup POSPrinter dialog box by clicking the CheckHealth button
- ② You can check the health of your Printer by clicking the CheckHealth button

3.4.5. CheckHealth Cash Drawer



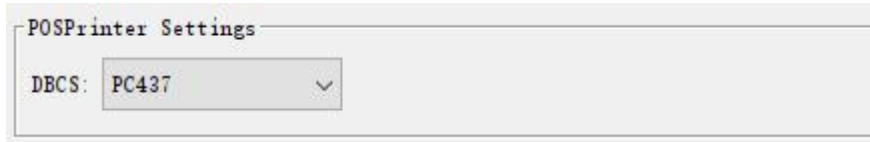
- ① Open the checkup Cash Drawer dialog box by clicking the CheckHealth button
- ② You can check the health of your Cash Drawer by clicking the CheckHealth button

3.5. Port Settings

- USB
Select USB, the jpos driver will connect the device through USB
- Ethernet
Select Ethernet, the jpos driver will connect the device through TCP. Please enter the correct printer IP address. The default port number is 9100. If you modify the printer's port, please modify the Port.
- Serial Port
Select Serial Port, the jpos driver will connect the device through serial. Please select the correct printer com port and baud rate.
- IoTimeoutMillis
Connection timeout, ranging from 0 to 9999

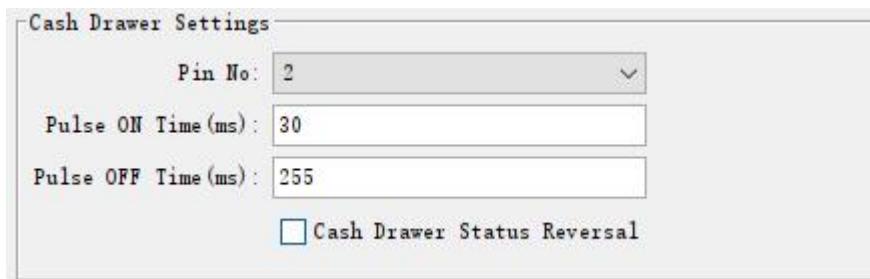
3.6. Device Settings Panel

3.6.1. Printer Settings

A screenshot of the 'POSPrinter Settings' dialog box. It contains a single dropdown menu labeled 'DBCS:' with the value 'PC437' selected. The dialog has a light gray border and a title bar.

DBCS: Select double bytes character set of Javapos printer.

3.6.2. Cash Drawer Settings

A screenshot of the 'Cash Drawer Settings' dialog box. It contains four settings: 'Pin No:' with a dropdown menu showing '2'; 'Pulse ON Time (ms):' with a text input field showing '30'; 'Pulse OFF Time (ms):' with a text input field showing '255'; and a checkbox labeled 'Cash Drawer Status Reversal' which is currently unchecked. The dialog has a light gray border and a title bar.

1. Pin No: Pin connecting to the money box, value = "2", Cash Drawer pin 2;value = "5", Cash Drawer pin 5
2. Pulse ON Time: High level time, in milliseconds,The range is 0~255.
3. Pulse OFF Time : Low level time, in milliseconds,The range is 0~255.
4. Status Reverse : Cash box status reversal